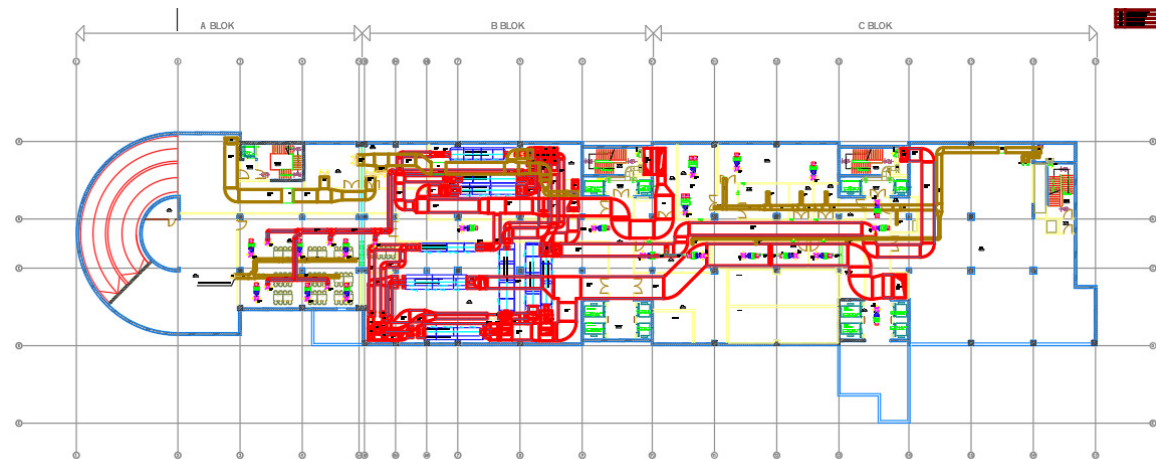
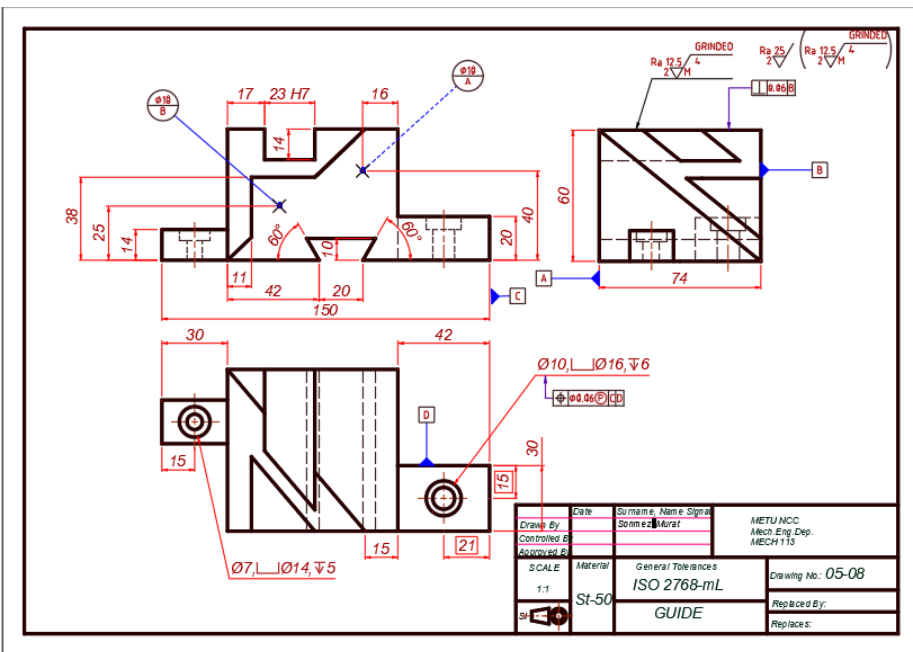


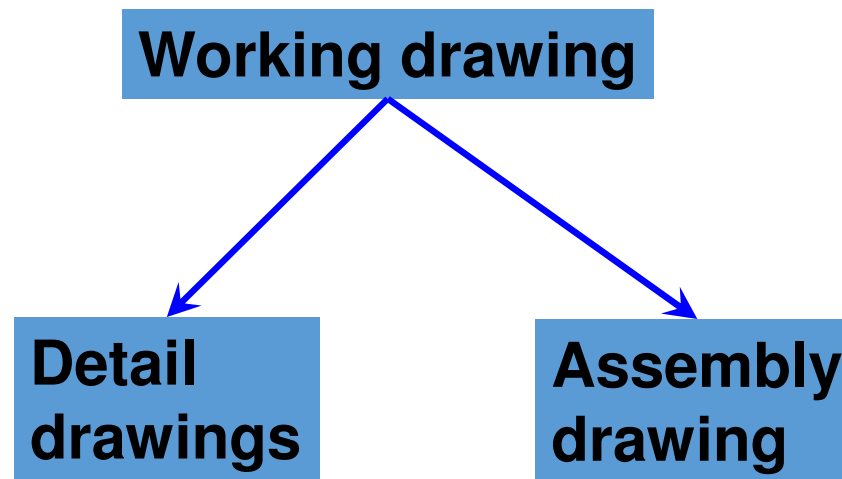
Presentation # 5

Working Drawing (Engineering Drawing)

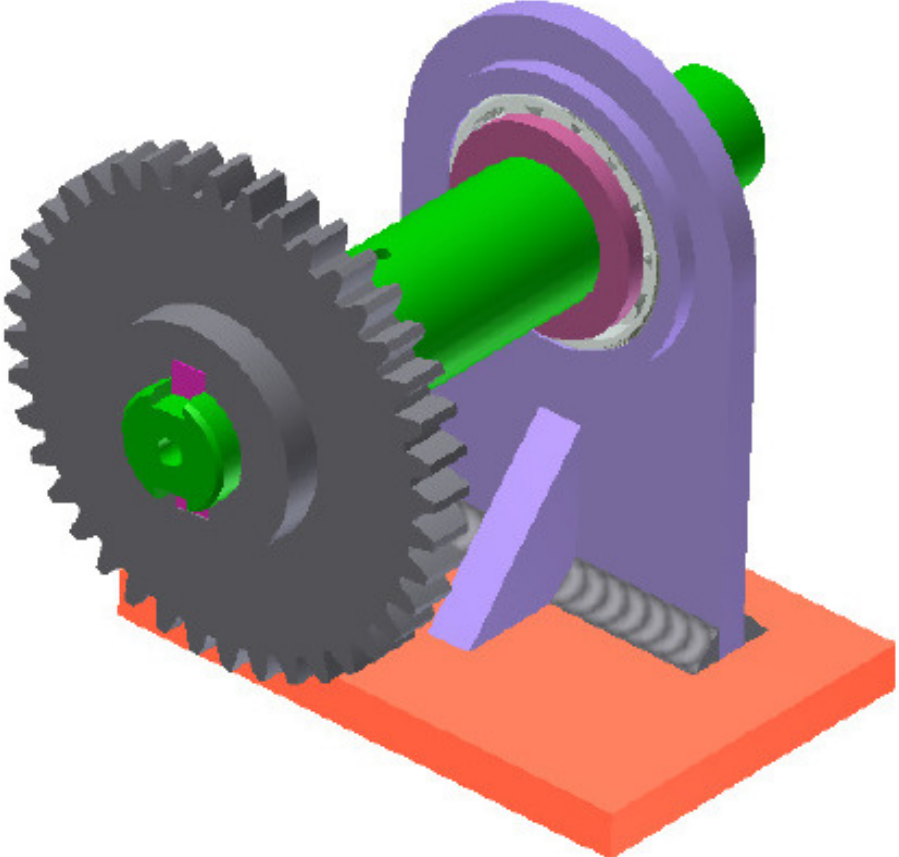


DEFINITION

- **Working drawing** is a set of drawing used during the work of making a product.



Assembly



DEFINITION

- **Detail drawing** is a **multiview representation** of a single part with **dimensions and notes**.
- **Assembly drawing** is a drawing of various parts of a machine or structure assembled in their relative working positions.

PURPOSE

- **Detail drawing** conveys the **information** and **instructions** for manufacturing the part.
- **Assembly drawing** conveys
 1. completed shape of the product.
 2. overall dimensions.
 3. relative position of each part.
 4. functional relationship among various components.

INFORMATION IN DETAIL DRAWING

1. General information → Title block

2. Part's information

2.1 Shape description → Object's

2.2 Size description → views

2.3 Specifications → Notes

GENERAL INFORMATION

- Name of company
 - Title of drawing (usually part's name)
 - Drawing sheet number
 - Name of drafter, checker
 - Relevant dates of action
(drawn, checked, approved etc.)
 - Revision table
- Unit
 - Scale
 - Method of projection

PART' S INFORMATION

Shape

- ❖ **Orthographic drawing**
- ❖ Pictorial drawing

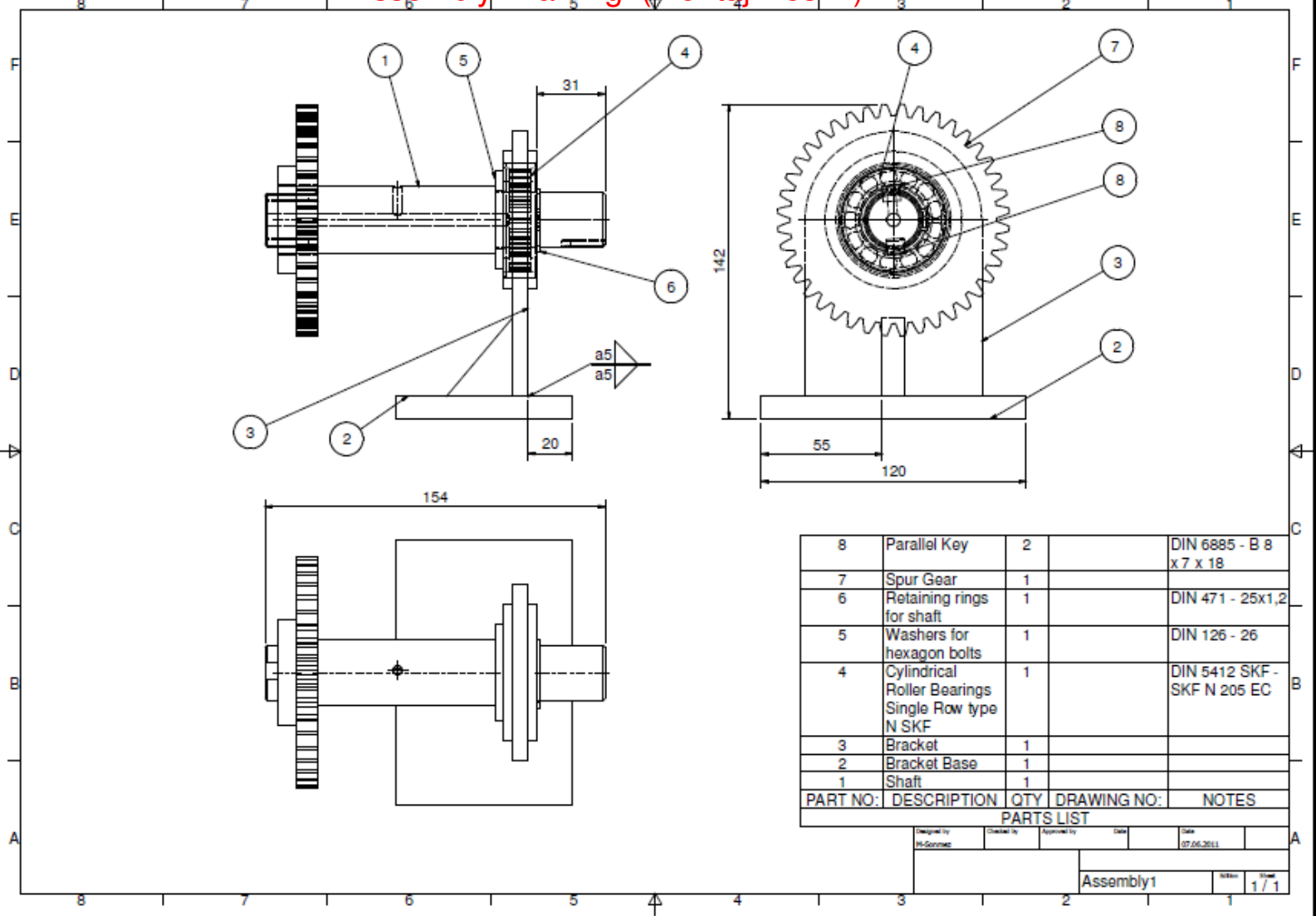
Size

- ❖ **Dimensions** and Tolerances

Specifications

- ❖ **Part number, name, number required**
- ❖ **Type of material used**
- ❖ **General notes**
- ❖ Heat treatment
- ❖ Surface finish
- ❖ General tolerances

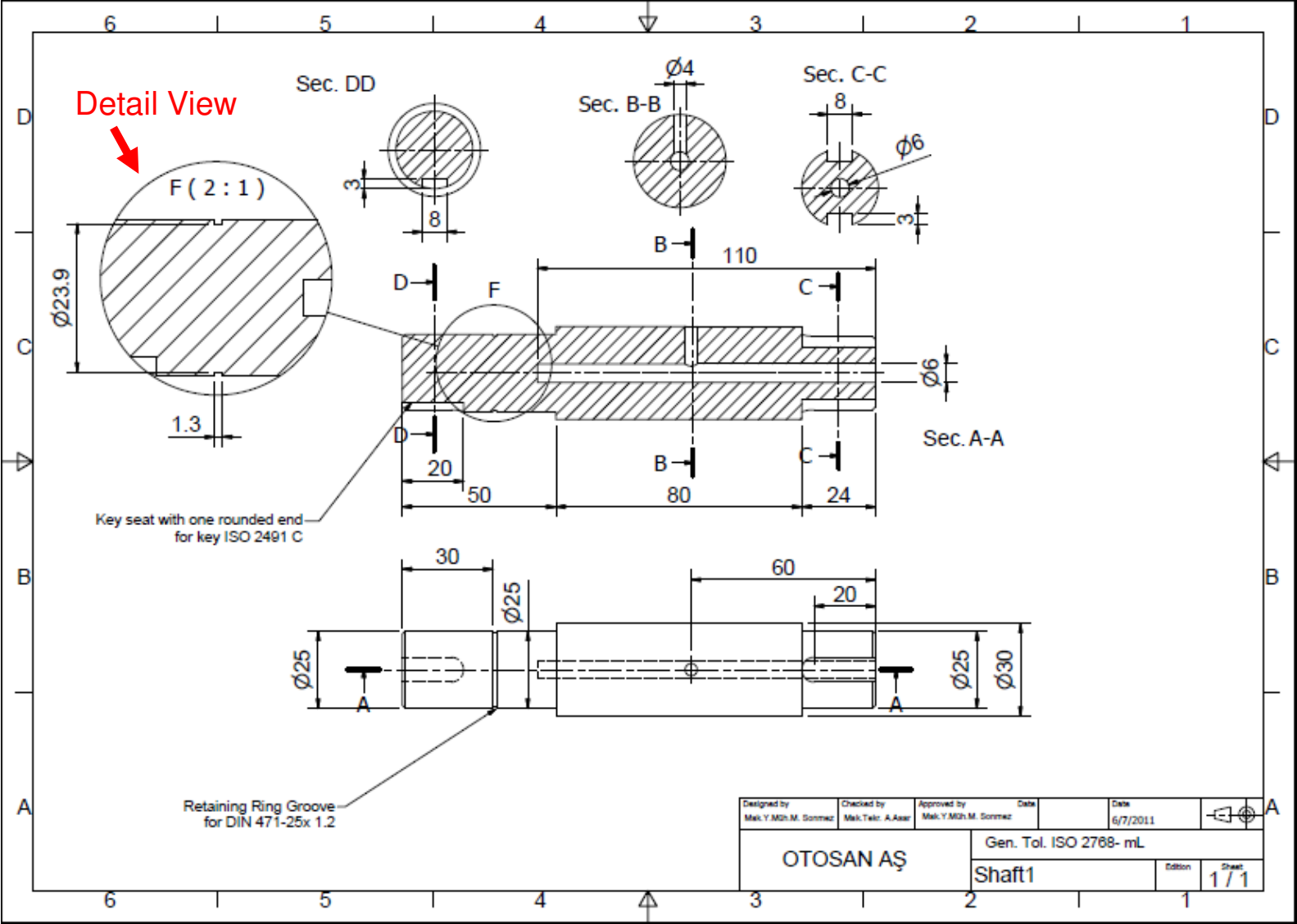
Assembly Drawing (Montaj Resmi)



8	Parallel Key	2		DIN 6885 - B 8 x 7 x 18	
7	Spur Gear	1			
6	Retaining rings for shaft	1		DIN 471 - 25x1,2	
5	Washers for hexagon bolts	1		DIN 126 - 26	
4	Cylindrical Roller Bearings Single Row type N SKF	1		DIN 5412 SKF - SKF N 205 EC	
3	Bracket	1			
2	Bracket Base	1			
1	Shaft	1			
PART NO:		DESCRIPTION	QTY	DRAWING NO:	NOTES
PARTS LIST					

Designed by	Checked by	Approved by	Date	Date
M. Sonmez			07.06.2011	
Assembly1				Sheet 1 / 1

Detail Drawing (İmalat Resmi)

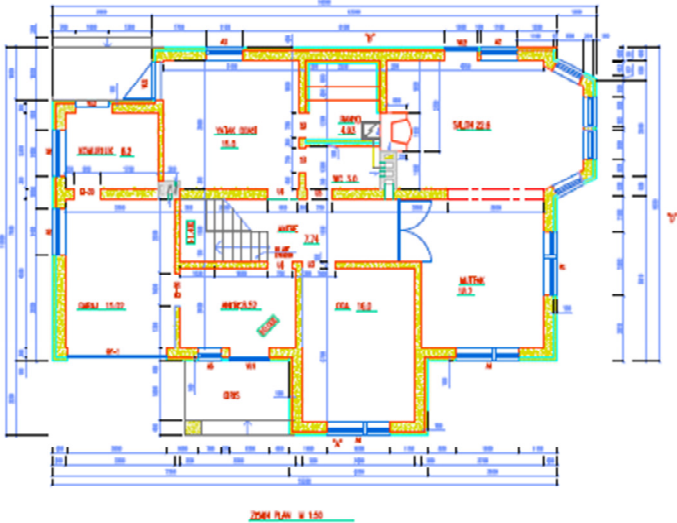


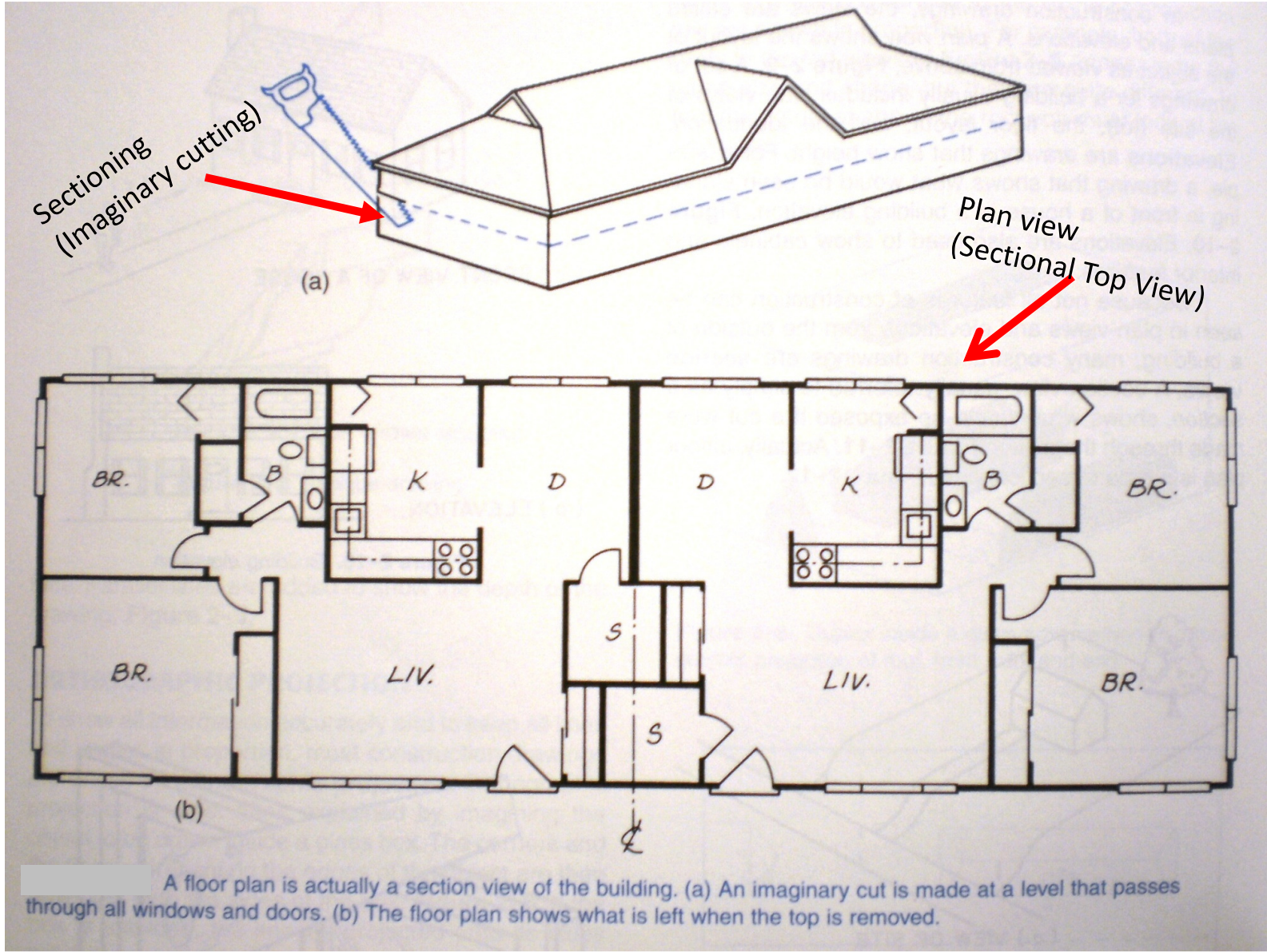
Plan & Elevation Views of Buildings

Front View (Front Elevation)

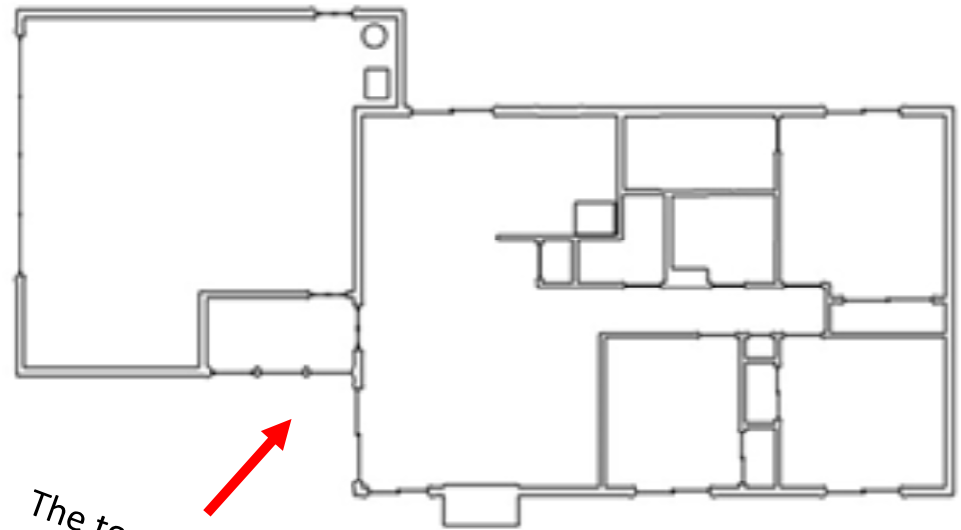
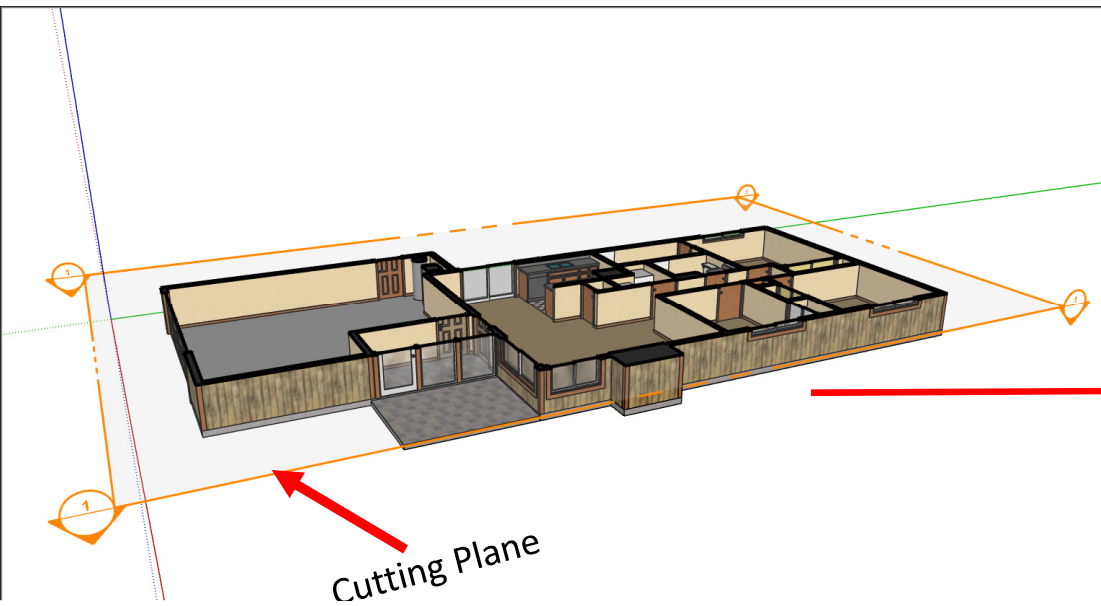
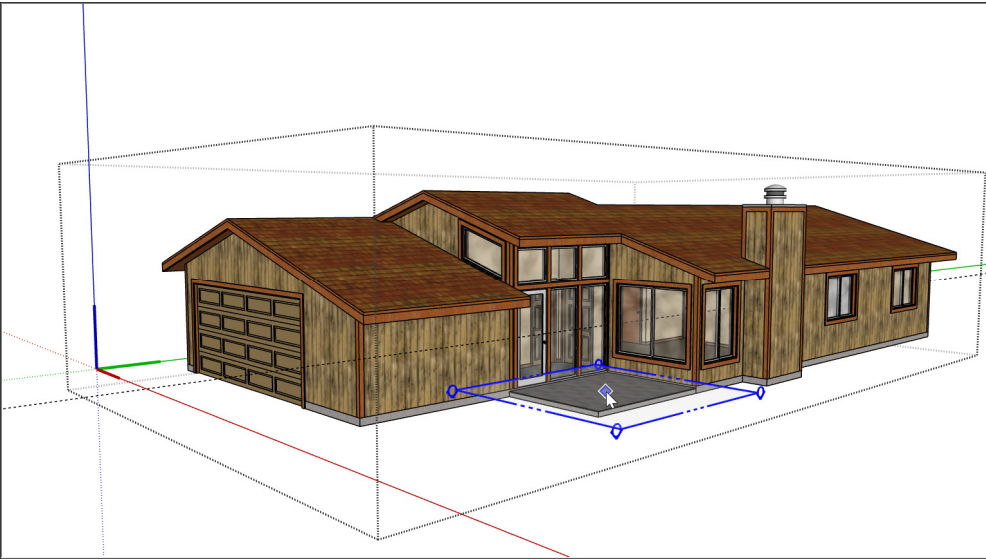


Sectional Top View (Plan View)





A floor plan is actually a section view of the building. (a) An imaginary cut is made at a level that passes through all windows and doors. (b) The floor plan shows what is left when the top is removed.



The top view of the remaining
part : PLAN VIEW



PERSPECTIVE OF BUILDING

FIG.-5

ORTHOGRAPHIC
PROJECTION
DRAWINGS

OF
THE
EXTERIOR

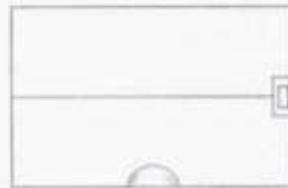


FIG.-8 ROOF PLAN



FIG-7 LEFT SIDE ELEV.

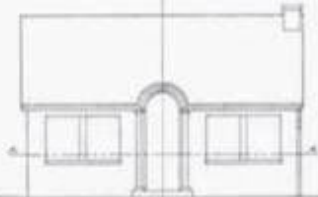


FIG-6 FRONT ELEVATION



FIG-7a RIGHT SIDE ELEV.

ORTHOGRAPHIC PROJECTION DRAWINGS
OF THE INTERIOR



FIG.-9

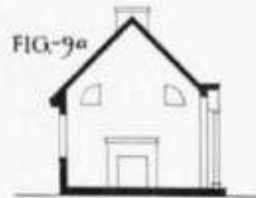


FIG-9a

CROSS SECTION



FIG-10a

FLOOR PLAN

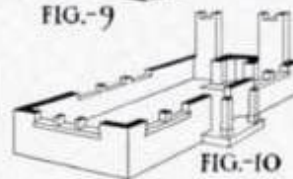


FIG-10

PICTORIAL SECT. & PLAN

House: An assembly



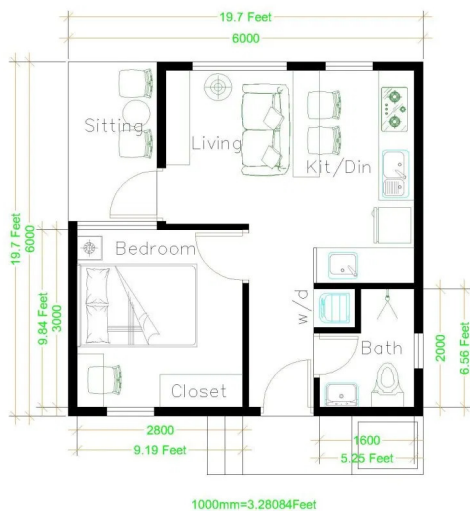
Front Elevation

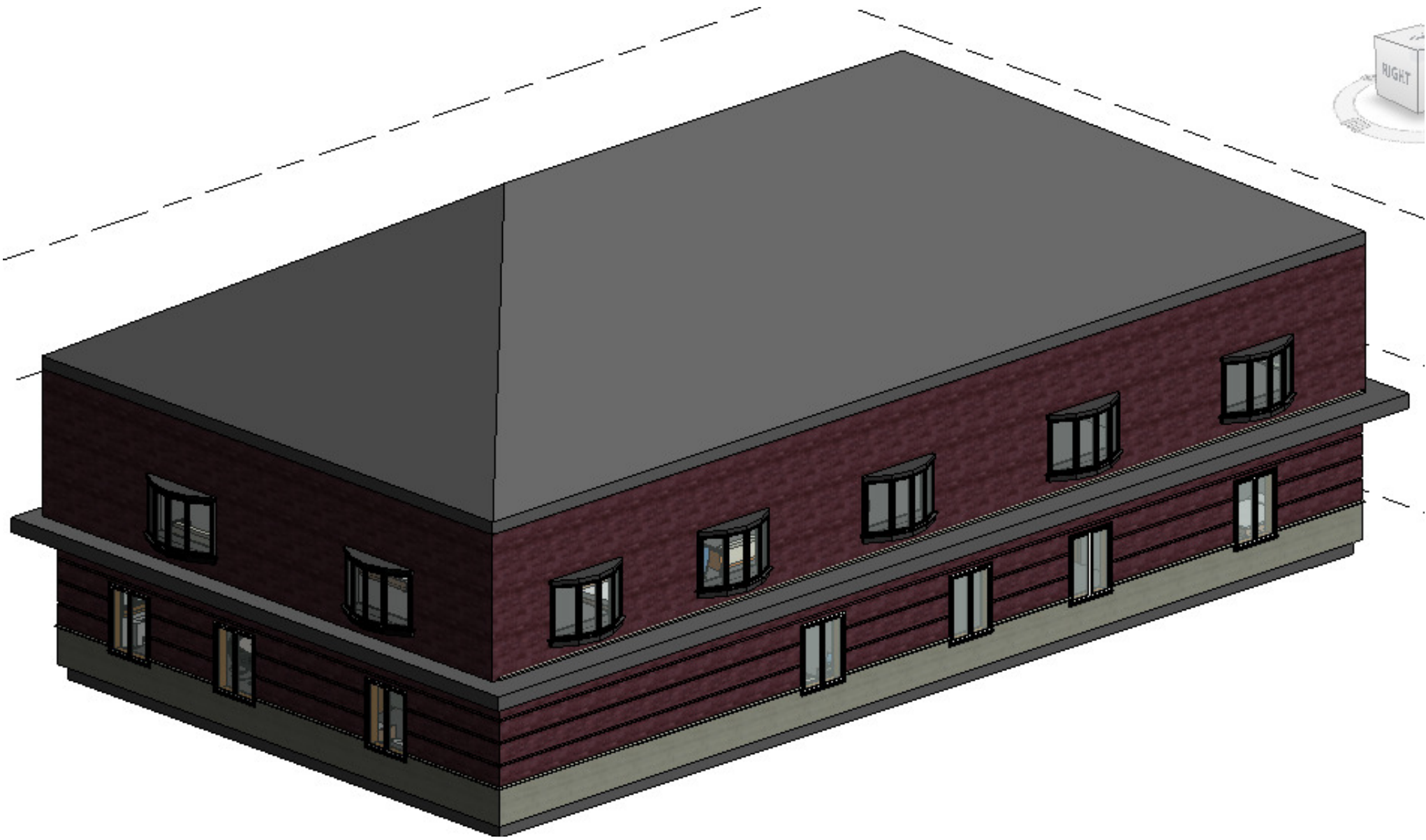


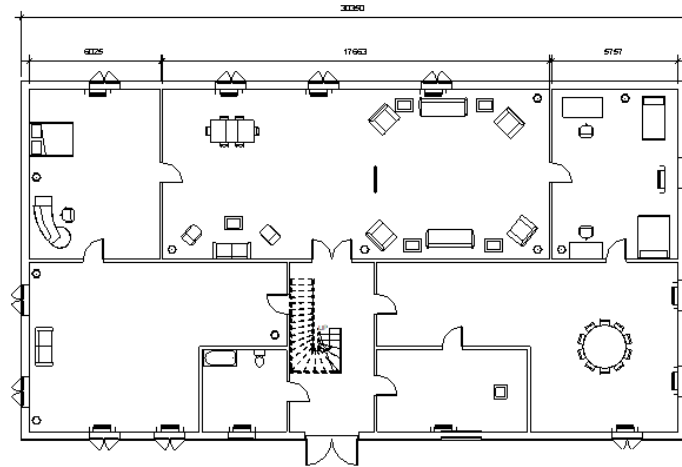
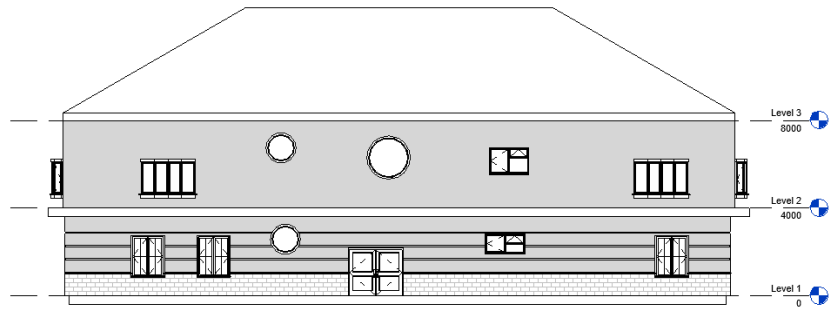
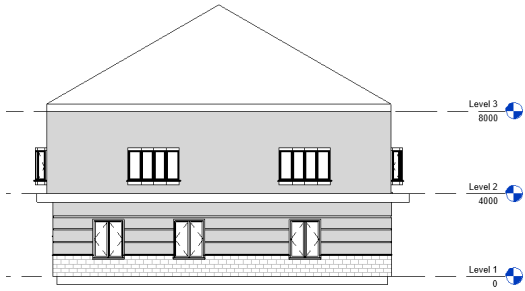
Left Elevation



Plan view (Sectional
Top view)







Balooning and parts list are not used on architectural drawings, civil engineering drawings

Technical notes are written, special hatching lines are used for highlightening the components

