

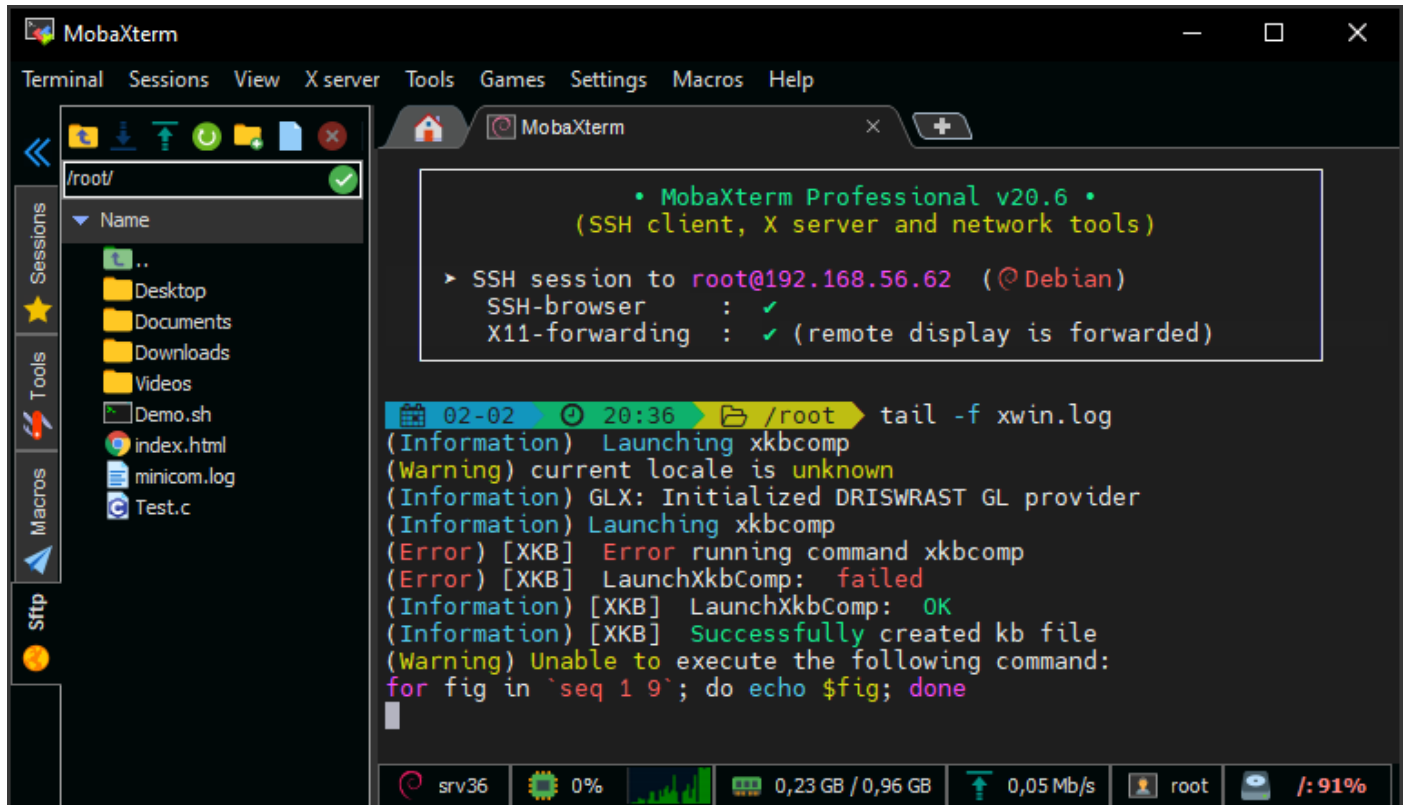
MobaXterm, WSL and ROOT Installation Guide (Feb 2026)

1. INSTALLATION MobaXterm

MobaXterm is enhanced terminal for Windows with X11 server, tabbed SSH client, network tools.

You can download this terminal from:

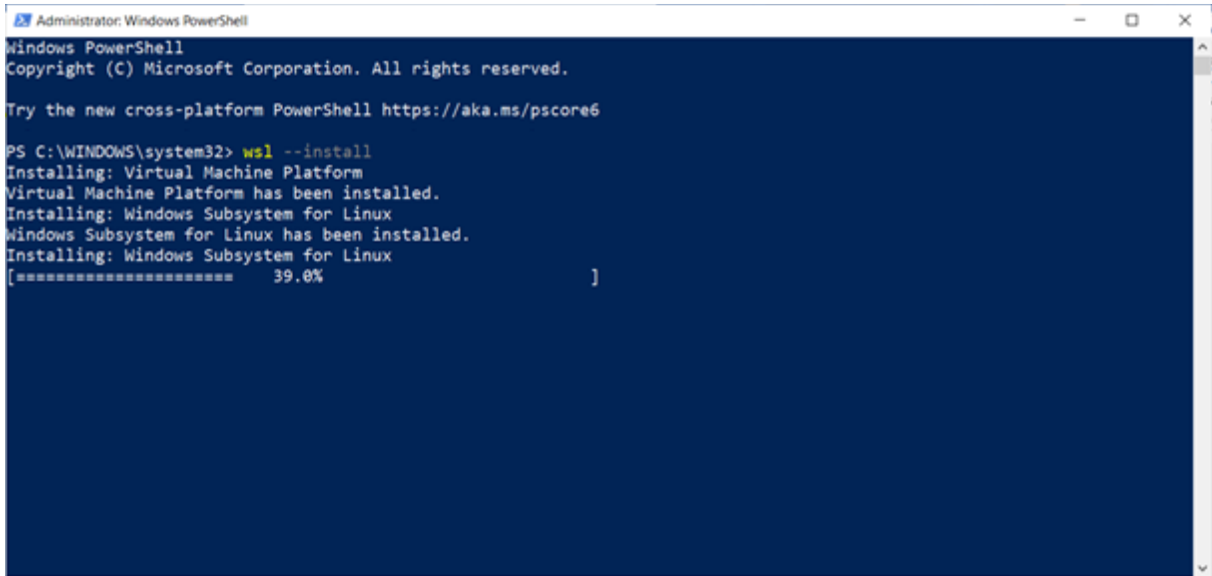
<https://mobaxterm.mobatek.net/download.html>



2. INSTALLATION OF WSL (Windows Sub System Linux)

1. Start PowerShell in Windows 10 or 11.
2. Write down the following command to install Ubuntu 24 Linux distribution in the command line.

```
wsl --install
```

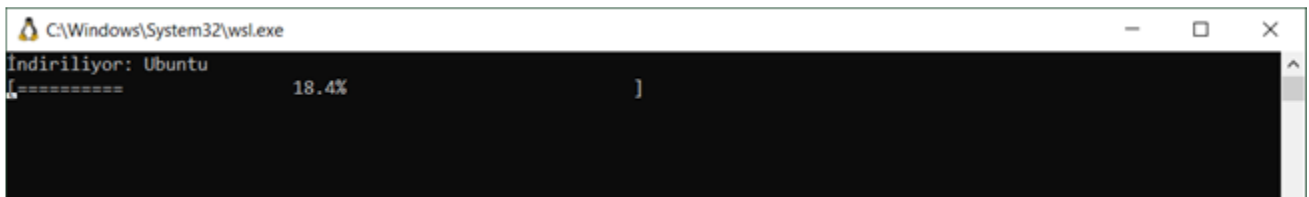


```
Administrator: Windows PowerShell
Windows PowerShell
Copyright (C) Microsoft Corporation. All rights reserved.

Try the new cross-platform PowerShell https://aka.ms/pscore6

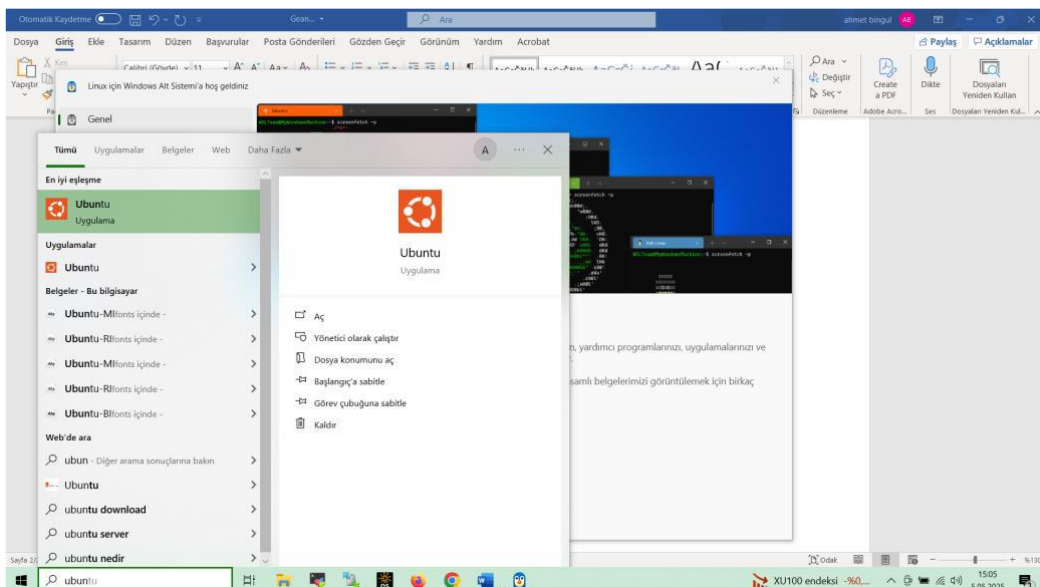
PS C:\WINDOWS\system32> wsl --install
Installing: Virtual Machine Platform
Virtual Machine Platform has been installed.
Installing: Windows Subsystem for Linux
Windows Subsystem for Linux has been installed.
Installing: Windows Subsystem for Linux
[===== 39.0% ]
```

3. Restart your computer when the installation is finished. Windows will complete the remaining part of the installation.



```
C:\Windows\System32\wsl.exe
Indiriliyor: Ubuntu
[===== 18.4% ]
```

4. Click on Start button then write Ubuntu. You'll see Ubuntu logo.



5. If you run Ubuntu first time, you need to provide username and password. Do not forget them.

```
abingul@LAPTOP-AN6F2F92: ~
Provisioning the new WSL instance Ubuntu
This might take a while...
Create a default Unix user account: abingul
New password:
Retype new password:
passwd: password updated successfully
To run a command as administrator (user "root"), use "sudo <command>".
See "man sudo_root" for details.

Welcome to Ubuntu 24.04.2 LTS (GNU/Linux 5.15.167.4-microsoft-standard-WSL2 x86_64)

 * Documentation:  https://help.ubuntu.com
 * Management:    https://landscape.canonical.com
 * Support:       https://ubuntu.com/pro

System information as of Mon May  5 15:07:12 +03 2025

System load:  0.1          Processes:            31
Usage of /:   0.1% of 1006.85GB  Users logged in:    0
Memory usage: 6%          IPv4 address for eth0: 172.23.192.146
Swap usage:   0%

This message is shown once a day. To disable it please create the
/home/abingul/.hushlogin file.
abingul@LAPTOP-AN6F2F92:~$
```

You can invoke the `lsb_release -a` command to learn Ubuntu version.

```
abingul@LAPTOP-AN6F2F92: ~
abingul@LAPTOP-AN6F2F92:~$ lsb_release -a
No LSB modules are available.
Distributor ID: Ubuntu
Description:    Ubuntu 24.04.2 LTS
Release:        24.04
Codename:       noble
abingul@LAPTOP-AN6F2F92:~$
```

6. Finally you should update the Ubuntu and install some additional programs. Invoke the following commands:

```
sudo apt update -y
sudo apt upgrade -y
sudo apt install x11-apps binutils
sudo apt install cmake cmake-curses-gui
sudo apt install gcc g++
sudo apt install libx11-dev libxpm-dev libxft-dev libxext-dev libglew-dev
sudo apt install libjpeg-dev libpng-dev libtiff-dev libgif-dev libxmu-dev
sudo apt install libxml2-dev libssl-dev libfftw3-dev libqt5core5a
sudo apt-get install qtbase5-dev
sudo apt-get install qtdeclarative5-dev
```

3. INSTALLATION OF ROOT

Root can be installed simple by using the following command. (There are alternative ways)

```
$ sudo snap install root-framework
```

To run Root

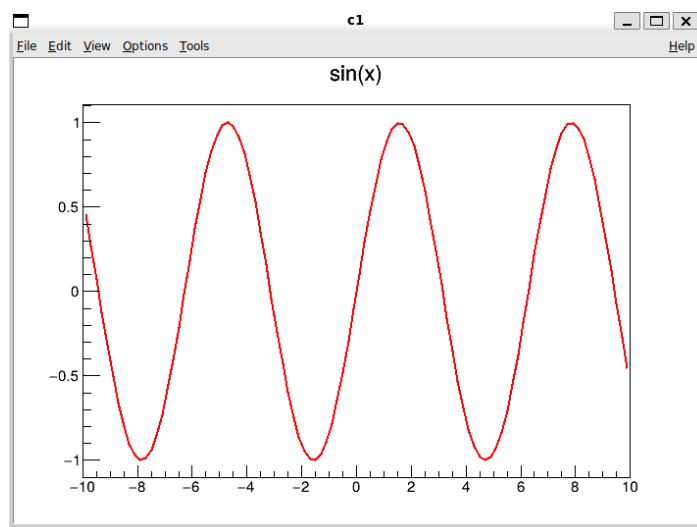
```
$ root
```

or

```
$ root -web=off
```

```
abingul@LAPTOP-AN6F2F92: ~
abingul@LAPTOP-AN6F2F92:~$ root
-----
| Welcome to ROOT 6.34.02                                     https://root.cern
| (c) 1995-2024, The ROOT Team; conception: R. Brun, F. Rademakers
| Built for linuxx8664gcc on Dec 28 2024, 08:39:22
| From tags/v6-34-02@v6-34-02
| With c++ (Ubuntu 13.3.0-6ubuntu2~24.04) 13.3.0
| Try '.help'/'.'?', '.demo', '.license', '.credits', '.quit'/'.'q'
|-----

root [0] TF1 f("fun","sin(x",-10,10)
(TF1 &) Name: fun Title: sin(x)
root [1] f.Draw()
Info in <TCanvas::MakeDefCanvas>:  created default TCanvas with name c1
root [2] _
```



To run pyRoot

```
$ pyroot
```